

The Newsletter

CUPE / Canadian Union
of Public Employees

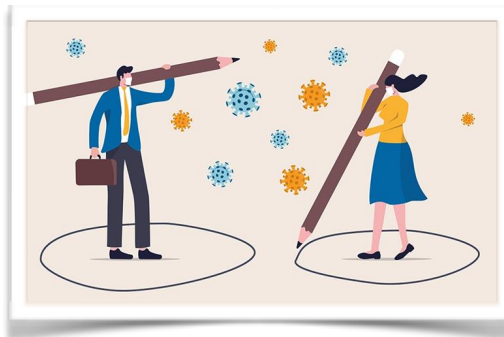


COVID-19, HELP DO YOUR PART...



Please remember to wash your hands frequently!

Keep space between yourself and others!



Treat everyone with kindness, respect, and appreciation!



COVID-19 RESOURCES AND INFORMATION

- For credible information pertaining to the BC government's response to the COVID-19 pandemic, visit: <https://www2.gov.bc.ca/gov/content/safety/emergency-preparedness-response-recovery/covid-19-provincial-support>
- An Emergency Response section has been added to our CUPE 1622 website. To view relevant information relating to COVID-19, visit: <https://www.cupe1622.com/>
- Questions about COVID-19 at work? Contact HR at jwist@spca.bc.ca OR jjacobson@spca.bc.ca

Next Meeting

We are working on transitioning our general meeting to an online format. Keep an eye on the CUPE 1622 website for updates and further details.



Shop Stewards

Interested in supporting and assisting members? 2-3 shop stewards needed. *Training provided*

Union Trustee

Looking for a way to get involved?



Attend our next meeting to learn more about the role.

Q&A: COVID-19 and Animals Edition

1

CAN MY PET GET COVID-19?

Some companion animals can be infected with COVID-19. However, at this time there is no evidence that pets pose a significant transmission risk to people.

2

CAN I GET COVID-19 FROM PETTING OR CARING FOR A PET OF SOMEONE WHO HAS IT?

There is no risk of transmission from viral contamination of animal hair. However, anyone caring for an animal from an affected home should keep this animal away from other animals for 14 days, and follow basic hygiene precautions.

3

CAN I BRING MY DOG ON A WALK DURING THIS PANDEMIC?

Yes, but please practice social distancing from other people. If you are actively sick with flu-like symptoms, someone else should care for your dog.

The Executive and Contact

President Rhonda Ott: r.ott1622@gmail.com

Vice President Peter Ratna: prajah.cupe1622@gmail.com

Recording Secretary Mallory Hoyland: malloryhoyland@gmail.com

Executive at Large Taylor Dockrey: tdockrey1622@gmail.com

Executive Treasurer Chelsea Blackwell: cblackwell1622@gmail.com

WWW.CUPE1622.COM



More information and details on our upcoming meetings can be found on our CUPE 1622 website!

SITES REFERENCED

- <https://alexchiri.com/2019/10/20/the-challenge-of-helping-others/>
- https://www.nicepng.com/ourpic/u2w7e6q8i1q8o0u2_get-involved-volunteer-icon-png/
- <https://clipartart.com/categories/wash-your-hands-clipart.html>
- <https://www.aljazeera.com/indepth/features/doctor-note-social-distancing-coronavirus-200319081547691.html>